

TYLER Wheels

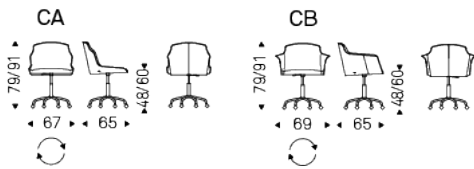


Product description

Swiveling chair with or without arms, adjustable in height and with castors. Base with 5 spokes in polished aluminium, column and gas piston in chromed steel (08) or with base and column in matt black aluminium and gas piston in chromed steel (08). Seat and back upholstered in fabric, micro nubuck, synthetic leather or soft leather as per sample card.

TYLER Wheels

Dimension



TYLER Wheels

Finishes: base

metal



matt black
aluminium



polished
aluminium

Finishes: seat

soft leather

						
971 BIANCO	937 PALLADIO	972 CANOVA	947 OYSTER	959 ICE	939 NYMPH	949 CENERE
						
951 CASTORO	993 ARTICO	938 DAKOTA	995 NARDÒ	983 ARGILLA	948 LINO	969 CASHMERE
						
945 SAFARI	950 TORTORA	960 BRUNO	942 FANGO	946 MARRONE	988 TABACCO	952 SMOKE
						
953 ARDESIA	977 PIOMBO	956 ATLANTICO	981 BISCOTTO	982 COGNAC	996 SIENA	994 CANYON
						
943 MOKA	891 TESTA DI MORO	944 BORDEAUX	989 ROSSO CORSA	973 NERO	987 SHERWOOD	940 NAVY
						
974 CAPRI						

fabric



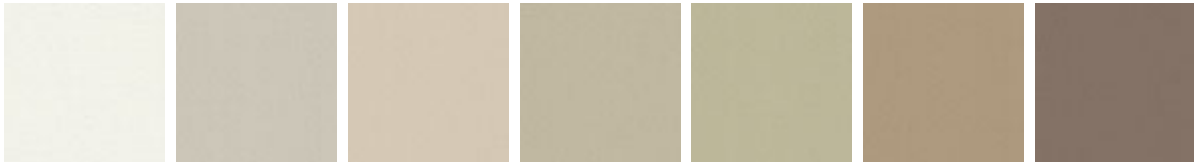


B405

B422

B712

synthetic leather



ECP01 BIANCO

ECP72 CANOVA

ECP47 OYSTER

ECP48 LINO

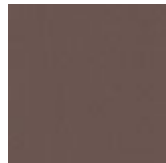
ECP25 CANAPA

ECP05 TORTORA

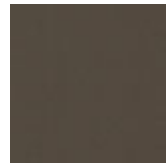
ECP26 FANGO



ECP83 ARGILLA



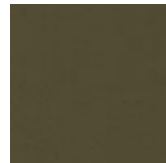
ECP07
MARRONE



ECP27 FOSSIL



ECP08 MOKA



ECP28
KALAMATA



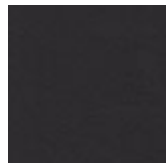
ECP36 CEMENTO



ECP23 LONDON



ECP37 ARDESIA



ECP24 NERO



ECP22 NAVY



ECP14
BORDEAUX



ECP13 ROSSO
CORSA

micro nubuck



MN103 WHITE

MN100 BEIGE

MN806 SAND

MN604 SHADOW

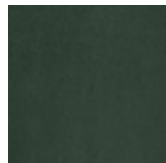
MN006 DUSTY
ROSE

MN413 ALMOND

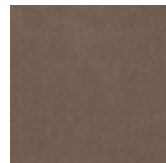
MN048
SUNSTONE



MN709 MINT



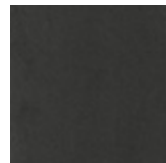
MN801 MUSK



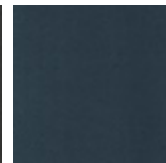
MN603 COGNAC



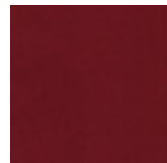
MN609 MARRON



MN618 LEAD



MN626
CHARCOAL



MN320
CARDINAL

glove soft leather



GLV02 DOVER



GLV03 ECRÙ



GLV05 CORDA



GLV07 ARGO



GLV11 TAUPE



GLV14 PLATOON



GLV15 CARBON



GLV17 HORNET



GLV12 OLIVA



GLV18 BARRIQUE